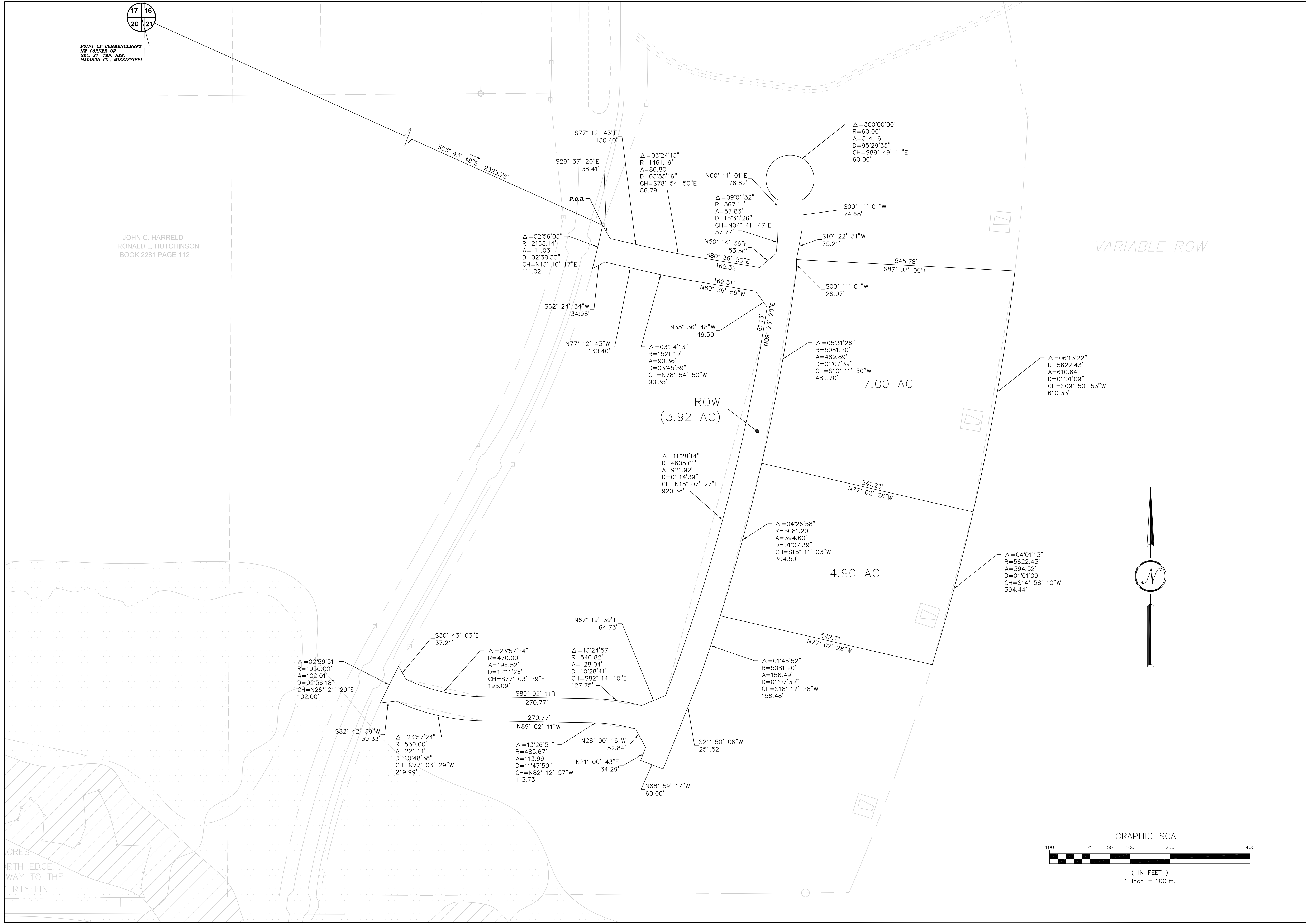


17 16
20 21

POINT OF COMMENCEMENT
NW CORNER OF
SEC. 21, T20N, R22E,
MADISON CO., MISSISSIPPI

JOHN C. HARRELD
RONALD L. HUTCHINSON
BOOK 2281 PAGE 112

VARIABLE ROW



CRES
RTH EDGE
WAY TO THE
ERTY LINE

DESIGNED BY W.S.D.	REVIEWED BY R.A.S.	DATE 4/20/15	DESCRIPTION
PROJECT HARRELD & HUTCHINSON MADISON COUNTY, MISSISSIPPI	TITLE PRELIMINARY PLAT EAST SITE INFRASTRUCTURE DEVELOPMENT	DRAWING SCALE AS SHOWN	REVISIONS
OWNER HARRELD & HUTCHINSON MADISON COUNTY, MISSISSIPPI	PROJECT CALHOUN STATION COMMERCIAL PARK		
SHEET			1

